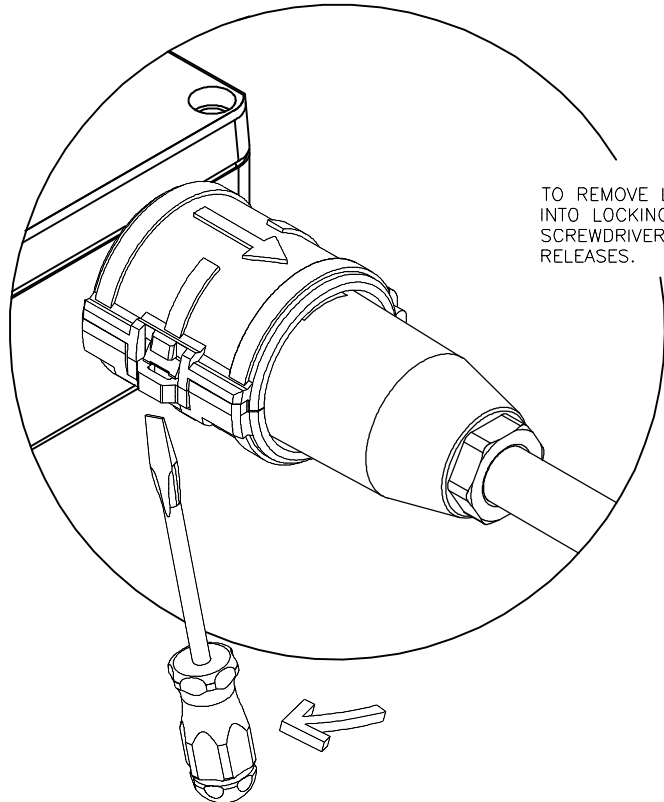


TO INSTALL LOCKOUT DEVICE, PLACE AROUND CORDSET END  
AND CLOSE UNTIL CONNECTOR SNAPS CLOSED.  
(ARROW SHOULD POINT TOWARDS THE CABLE)

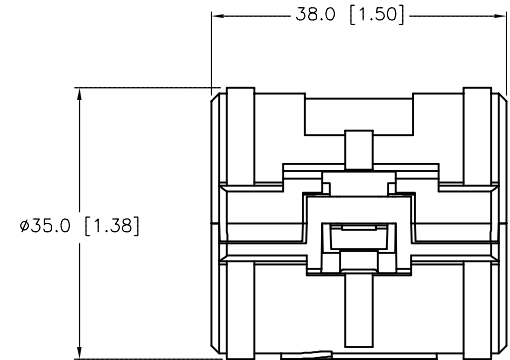


TO REMOVE LOCKOUT DEVICE, INSERT SMALL SCREWDRIVER  
INTO LOCKING GROOVE AS SHOWN IN PICTURE. ROTATE  
SCREWDRIVER IN DIRECTION SHOWN UNTIL LOCKING DEVICE  
RELEASES.

## SPECIFICATIONS

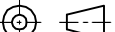
HOUSING MATERIAL/COLOR

NYLON 66/BLACK



LOCKOUT DEVICE FITS ALL STRAIGHT TURCK  
MINIFAST FIELD WIREABLE CONNECTORS.

SOURCE DRAWING - FOR REFERENCE ONLY

|   |   |   |     |   |  |   |              |
|---|---|---|-----|---|--|---|--------------|
| RELATED DOCUMENTS<br><br>1.<br><br>2.<br><br>3.<br><br>4. | 3RD ANGLE<br>PROJECTION   | <div>THIS DRAWING IS<br/>CONFIDENTIAL AND THE<br/>PROPERTY OF TURCK<br/>INC. USE OF THIS<br/>DOCUMENT WITHOUT<br/>WRITTEN PERMISSION IS<br/>PROHIBITED.</div> |     | <div><div>TURCK INC</div><div>High Technology Sensors and Automation Controls</div></div> |  | <div>3000 CAMPUS DRIVE<br/>MINNEAPOLIS, MN 55441<br/>1-800-544-7769<br/>(763) 553-7300<br/>(763) 553-0708 fax<br/>turck.com</div> |              |
|   |  |   |     |   |  |   |              |
|   |   |   |     |   |  |   |              |
|   |   |   |     |   |  |   |              |
| MATERIAL  | ALL DIMENSIONS<br>DISPLAYED ON THIS<br>DRAWING ARE FOR<br>REFERENCE ONLY              | DRFT  | RDS | DATE  | 12/29/04                                 |   |              |
|   |   | APVD  |     | SCALE   | 1=1.0                                    |   |              |
| FINISH  | CONTACT TURCK<br>FOR MORE<br>INFORMATION  | UNIT OF MEASUREMENT   |     |   | DESCRIPTION<br><br>LOCK-MINI-FW (10/BAG) |   |              |
|   |   | MILLIMETERS   |     |   |  |   |              |
|   |   | DO NOT SCALE THIS DRAWING   |     |   | IDENTIFICATION NO.<br><br>A0883          |   | REV<br><br>B |
|   |   |   |     |   | FILE: A0883                              |   | SHEET 1 OF 1 |